



GOVERNMENT OF ANDHRA PRADESH , INDIA  
SMART CITY –PART INFRA PROJECT

JVK INFRA INDIA PVT. LTD./JV

[www.jvkinfra.co](http://www.jvkinfra.co) and [www.jvkusaep.com](http://www.jvkusaep.com)

HYDERABAD, TELANGANA,



**PROJECT DESCRIPTION**



Name of work: “Beachfront Re-Development at RK Beach”

Client: Govt of Andhra Pradesh , India ( Part of Smart City Projects)

Total Estimated value of work: **Rs.106,50,00,000/-**

Contract value of work: **Rs. 116,71,27,369/-**

Period of completion: 18 Months

Defect Liability Period : 24 Months



## SALIENT FEATURES

- Location of site : Visakhapatnam , Andhra Pradesh
- Total Contract value of work : Rs. 116,71,27,369/-
  - Road Work : Formation of base GSB, WMM, and DBM, BC ABS Road Studs Cat Eyes , Road Marking etc.
  - Drain Work : Drain with RCC bed & Walls, Precast SFRC perforated Drain Cover
  - Sea Shore Protecting Walls (Retaining Walls) : Retaining wall with RCC bed & Walls, Precast tetrapods Gabian structures, Stainless steel railing etc.
  - Promanade, Pathways Plazas Ramps, Kerbs, Boardwalks And Amphitheaters : Formation of with GSB, WMM, Flooring with Granite Paving stone, Concrete Paver Blocks, SFRC Precast Kerb walls.
  - Bicycle Track ; Flooring with Stampo Concrete imprint system.
  - Kisoks as Food Stall/ Seating Shop : Kiosk Super structure as per drawing.
  - Toilet Blocks 24.5 M x5.90 M : Toilet Block with RCC & Masonry structure With Electrical & Sanitary works etc.
  - Toilet Blocks Type 8.0 M x12.15 M : Toilet Block with RCC & Masonry structure With Electrical & Sanitary works etc.
  - Life Guard Tower : Life Guard Tower with RCC Foundation & Steel structure With Electrical
  - Bicycle Rental Shop : Bicycle Rental Shop with RCC & Masonry structure With Electrical & Sanitary works etc.



- Bus Stop : Bus Stop with RCC & Masonry Structure  
With Electrical & Sanitary works etc.
- RK Beach Shops : RK Beach Shops with RCC & Masonry structure  
With Electrical & Sanitary works etc.
- Water ATM : Water ATM with RCC & Masonry structure  
With Sanitary works, Providing Water ATMs etc.
- Pump Room : Pump Room with RCC & Masonry structure  
With Sanitary works, Electrical Work with 1000 KVA  
Transformer, LT Panel Boards, Pumps, Incl-Rake  
Course Screen Mechanism with Belt Conveyor etc.
- Statue Relocation : Statue Removing & shifting of sculptures.
- Construction of New & Extension of Culverts : Construction Culverts with RCC Structure Etc.
- Retrofitting of Culverts : Appointing a Third Party QC Agency for Test  
Conducting etc.
- Electrical Works : Electrical Room with RCC & Masonry Structure  
With Sanitary works, Electrical Work Outdoor LT  
Panel Boards, External Cabling , External Pole &  
Lights fixture Etc,
- Irrigation Tanks & Drainage Sump : Irrigation Tanks & Drainage Sump with RCC Structure  
Etc.



- Plumbing works : Plumbing works External Drainage system & Water supply, Pumps Etc.
- Signages : Signages on RCC Pedestal with Granite Cladding, PVDF Coated Aluminum sheet in Signage & Sign Boards as per Drawing etc.
- Softscape : Landscape with Ground preparation with Red soil & Organic Manure Supply & Install Trees & Plants ,Grass Lawns etc.
- Irrigation ( Sprinkler, Drip & Hydrant Irrigation System : Irrigation System for landscaps , Trees & Plants, Grass Lawns HDPE Pipe Laying with valves Etc.
- Relocation and Shifting : Uninstalling and Shifting at new place of existing solar street light, of Existing Utilities highmast/ street light poles, horn type speaker, electrical poles, CCTV poles, Fiber optics cable , Electrical feeder pillar, Telephone junction/unit, Traffic signal pole.
- Demolition : Dismantling of existing structures like culverts, bridges, retaining walls and other structure etc,



- Outdoor Gym : Outdoor Ply equipments Like Big Shoulder Wheel, Elliptical Cross Trainer, Pull Down Challenger, Seated Chest Press, HD Squat Pushing, HD Health Walker, HD Mini Ski, HD Waist Twister Etc.
- ESMP-Environmental and Social Management Plan : Temporary barricading, Installation of Caution/sign/diversion boards, Providing, , maintaining cleaning and shifting of wet type mobile toilet & mobile drinking water counter/kiosk, Provision of traffic wardens.



## Material requirement

Sl,No	Description	Units	Quantity
1	Granular sub-base -GSB	Cum	7577
2	Wet mix macadam-WMM	Cum	9471
3	Dense graded bituminous macadam-DBM	Cum	1168
4	Bituminous concrete-BC	Cum	1422
5	40-mm Metal	Cum	7458
6	20-mm Metal	Cum	13156
7	12-mm Metal	Cum	6122
8	Sand	Cum	10925
9	Sand for Filling	Cum	2092
10	RR Stone	Cum	503
11	Cement	Bags	134569
12	Flyash Cement solid blocks size 290 x 225 x 140 mm	Nos	162550
13	Bricks	Nos	97797
14	Steel	Mt	1457
15	Gravel or Embankment soil	Cum	13795
16	Red Soil	Cum	21975
17	Polished black granite 40MM Thick Paving Stone	Sqm	1533
18	Tactile tiles	Sqm	1283
19	Grey concrete pavers using CC M40 having thickness 80 mm	Sqm	12362
20	Concrete grass pavers using CC M40 having thickness 80 mm	Sqm	2224
21	Brown concrete pavers using CC M40 having thickness 80 mm	Sqm	150



## Material requirement

Sl.No	Description	Units	Quantity
23	River Wash Adhunic Granite 40mm Thick Paving Stone	Sqm	10364
24	Adhunic Flamed granite- 40mm Thick Paving Stone	Sqm	20
25	Flamed tan brown 40mm Thick Paving Stone	Sqm	1878
26	Tan brown polished granite 20mm Thick Paving Stone	Sqm	567
27	River Wash tan brown 40mm Thick Paving Stone	Sqm	2267
28	Lather tan brown 40mm Thick Paving Stone	Sqm	972
29	Flamed adhunic 40mm Thick Paving Stone	Sqm	930
30	Black lather granite 40mm Thick Paving Stone	Sqm	7738
31	Lather grey tandur stone 40mm Thick Paving Stone	Sqm	12955
32	Polished grey tandur stone 40mm Thick Paving Stone	Sqm	2286
33	Rough yellow tandur stone 40mm Thick Paving	Sqm	5906
34	Rough chocolate tandur stone 40mm Thick Paving	Sqm	4414
35	polished black granite 40mm Thick Paving Stone	Sqm	606
36	Lather black granite 20mm Thick Paving Stone	Sqm	773
37	40 mm thick Rough Cuddapah/Shabad stones	Sqm	350
38	Grey cobbles 100 x 100 x 100 mm rough finish	Sqm	20
39	8 mm thick mirror polished granite tiles	Sqm	183
40	Vitrified tiles	Sqm	1321
41	Ceramic tiles	Sqm	359
42	Dadoing to internal walls of Glazed red or white full body ceramic wall tiles	Sqm	89



## Material requirement

Sl,No	Description	Units	Quantity
43	China Mosalc Tiles,	Sqm	1582
44	Flamed sadarhalli grey 20mm Thick Paving Stone	Sqm	25
45	<b>Other Items</b>		
46	ABS Road Studs Cat Eyes	Nos	3151
47	Road Marking with Hot Applied Thermoplastic Compound	Sqm	1631
48	Stainless Steel Grating & railing	Kgs	9116
49	Bipolar corrosion inhibating admixture in concrete	Kgs	33437
50	precast SFRC perforated Drain Cover M 25 of size 600X300X100/75mm.	Nos	5000
51	precast SFRC perforated Drain Cover M 25 of size 600X600X100/75mm	Nos	51
52	Gabian Box	Cum	675
53	PRECAST SEATING as per Architectural drawing.	Nos	1365
54	SFRC Precast Kerb walls of size 0.6m x 0.15m x 0.45m using CC M20 -BULL NOSE KERB.	Rmt	16767
55	SFRC Precast Kerb walls of size 0.6m x 0.2m x 0.45m using CC M20- HALF BATTEN KERB .	Rmt	719
56	SFRC Precast Kerb walls of size 0.6m x 0.2m x 0.45m using CC M20 -FLAT KERB	Rmt	7218
57	FRP Dustbins with galvanised Steel frame & steel Plates	Nos	184
58	Hot Dip Galvanized Structural steel work in riveted, bolted or welded in built up sections, trusses and framed	Kgs	6829
59	Kiosk Super structure	Nos	4





## Material requirement

Sl,No	Description	Units	Quantity
60	Aluminium screen using powder coated 50 micron Aluminium Box sections	Kgs	15832
61	MS GRATING	Kgs	3669
62	WATER ATM	Nos	13
63	BICYCLE STAND.	Nos	20
64	Aluminium composite cladding	Sqm	350
65	Crash barrier.	Rmt	107
66	Signage and wayfinding for outdoors using PVDF Coated 2.0 mm thick Aluminum sheet	Sqm	52
	<b>OUTDOOR GYM</b>		
67	S&F of Koochie or equivalent Make Big Shoulder Wheel	Nos	5
68	S&F of Koochie or equivalent Make Elliptical Cross Trainer:	Nos	9
69	S&F of Koochie or equivalent Make Pull Down Challenger	Nos	5
70	S&F of Koochie or equivalent Make Seated Chest Press :	Nos	7
71	S&F of Koochie Make HD Squat Pushing	Nos	4
72	S&F of Koochie or equivalent Make HD Health Walker	Nos	9
73	S&F of Koochie or equivalent Make HD Mini Ski	Nos	3
74	S&F of Koochie or equivalent Make HD Waist Twister :	Nos	4
75	Curved S tructural Posts of height 3.6m, and 2.7m are to be schedule HOT DIP Galvanized steel	Nos	1
76	The Train consists of a Tunnel which is made of galvanized steel	Nos	1



## Material requirement

Sl.No	Description	Units	Quantity
	<b>SOFTSCAPE</b>		
	<b>GROUND PREPARATION:</b>		
77	Supplying good earth:	Cum	5035
78	Supplying of organic manure	Cum	10070
79	Supplying of sand	Cum	5035
80	SUPPLY AND INSTALL -Trees/ Palms/ Shrubs/ Ground Covers		
81	Trees: Supplying and planting of trees as per under noted varieties,	Nos	13376
82	Ground Covers - Filling with prepared manure soil in the ratio 1:6 (one part of sludge to six parts of good earth by volume )	Nos	174968
83	Grass/Lawns:Lawn preparation and maintainence Preparation of lawn for grassing by excavating to a depth of 30 cms.	Sqm	5500
84	IRRIGATION SPRINKLER , DRIP & HYDRANT IRRIGATION SYSTEM		
85	Piping Network -HDPE & PVC Pipe Line	Rmt	21702
	<b>EXTERNAL LIGHT FIXTURE AND POLE</b>		
86	7.00 Mtrs height Poles with Fixture	Nos	150
87	4.00 Mtrs height Poles with Fixture	Nos	148
88	12 Mtrs Polygon High Mast suitable for 6 numbers 100W LED light fixture	Nos	65
89	16 Mtrs Polygon High Mast suitable for 8 numbers 100W LED light fixture	Nos	3

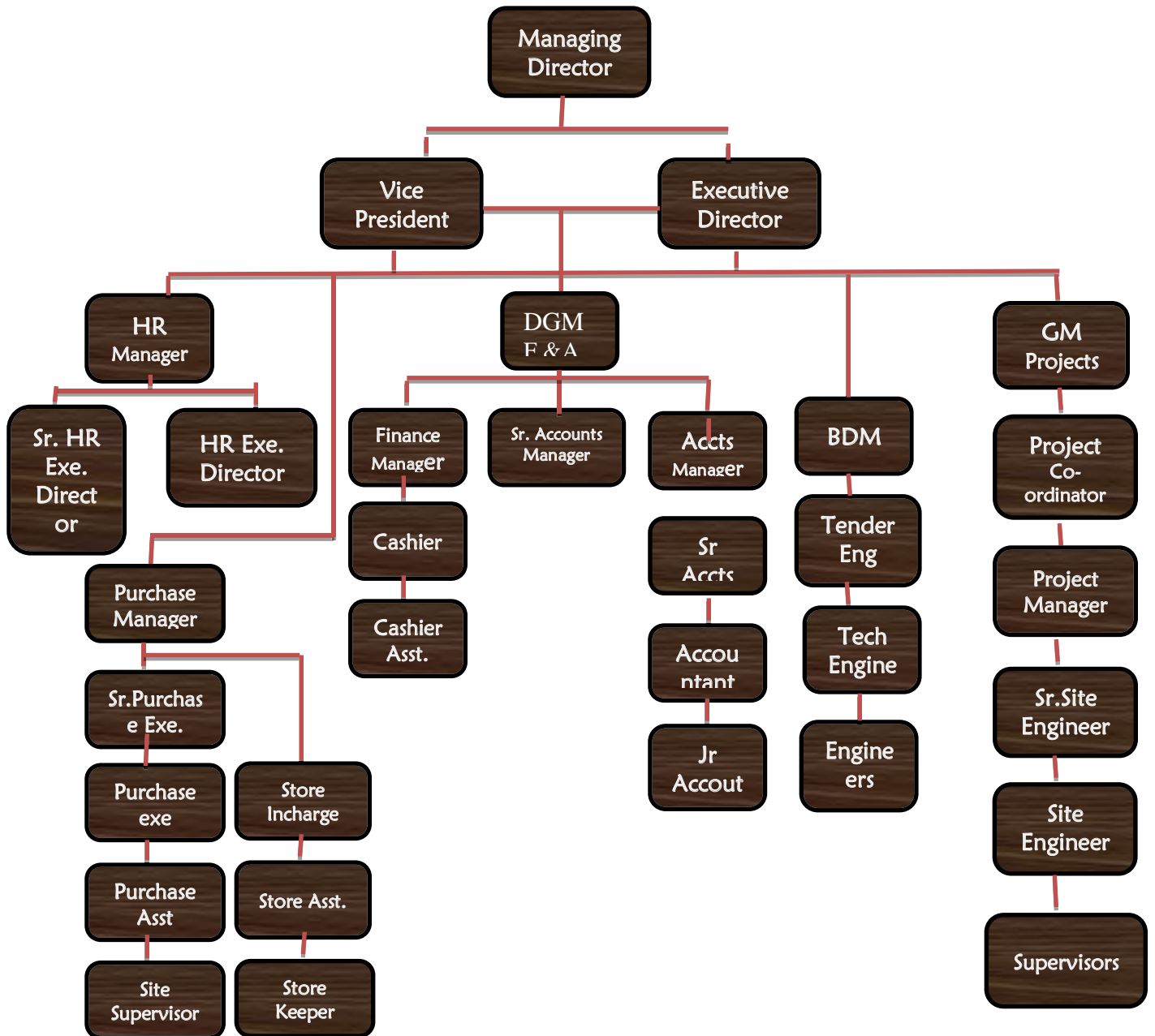


## Material requirement

Sl,No	Description	Units	Quantity
	<b>ELECTRICAL WORKS</b>		
	<b>LT OUT DOOR KIOSK</b>		
90	MAIN PANEL-TYPE 1	Nos	2
91	MAIN PANEL-TYPE 2	Nos	5
92	MV CABLES	Rmt	27150
93	1000 KVA copper wound Transformers	Nos	1
94	MAIN LT PANEL FOR SEWAGE PUMP	Nos	1
95	AUXILLIARY LT PANEL FOR SEWAGE PUMP	Nos	1
96	200 KVAR APFC PANEL	Nos	1
	<b>SAFETY EQUIPMENTS</b>		
97	RUBBER MAT	Nos	1
98	FIRE BUCKET	Nos	1
99	FIRST AID TREATMENT CHART	Nos	1
100	FIRST AID BOX	Nos	1
101	DANGER BOARDS	Nos	1
102	FIRE EXTINGUISHER	Nos	1
	<b>PUMPS EQUIPMENTS</b>		
103	SEWAGE NON CLOG SUBMERSIBLE PUMP	Set	1
104	SEWAGE SUMP DRAIN PUMP	Set	1
105	Toilet Block Type-1& 2 Plumbing System	Set	5
106	RK Beach Shop-1 & 2 Restaurant	Set	2
107	Non clog submersible desilting Pump	Set	1
108	VFD Based Pump Station	Set	2
109	Fertigation Pump	Set	2



## ORGANISATION CHART





## Technical Staff Employees

- Project Manager : 1 no
- Planning Manager : 2 no
- Billing/Procurement  
Engineer : 1 no
- Electrical Engineer : 1 no
- PHE Engineer : 2 nos
- QC/QA Engineer : 1 no
- Civil Engineers : 3 nos
- Horticulture Expert : 1 no
- Environment Expert : 1 nos
- Occupational Health and  
Safety Specialist : 1 no
- Social Specialist : 1 no



### **Machinery's Employment:**

➤ Automatic Batching Plant	:	1 No's
➤ JCBs/Excavators	:	4 No's
➤ Lorries / Tippers/ Dumpers	:	4 No's
➤ Motor Grader	:	2 No's
➤ Road Roller Smooth wheel	:	1 No's
➤ Road Roller Vibratory	:	1 No's
➤ Water tankers	:	4 No's
➤ Asphalt mixing plant with electronic controls	:	1 No's
Asphalt Paver	:	1 No's
➤ Transit Mixture	:	8 No's
➤ Concrete Pumps	:	2 No's
➤ Truck Crane	:	2 No's
➤ Vibratory Compactor	:	8 No's
➤ Automatic Welding Set	:	2 No's
➤ Earth Testers	:	2 No's
➤ Mustimeters	:	4 No's
➤ Relay Testing Kits	:	2 No's
➤ Generators	:	2 No's
➤ Quality Control Lab with all required equipment	:	1 No's

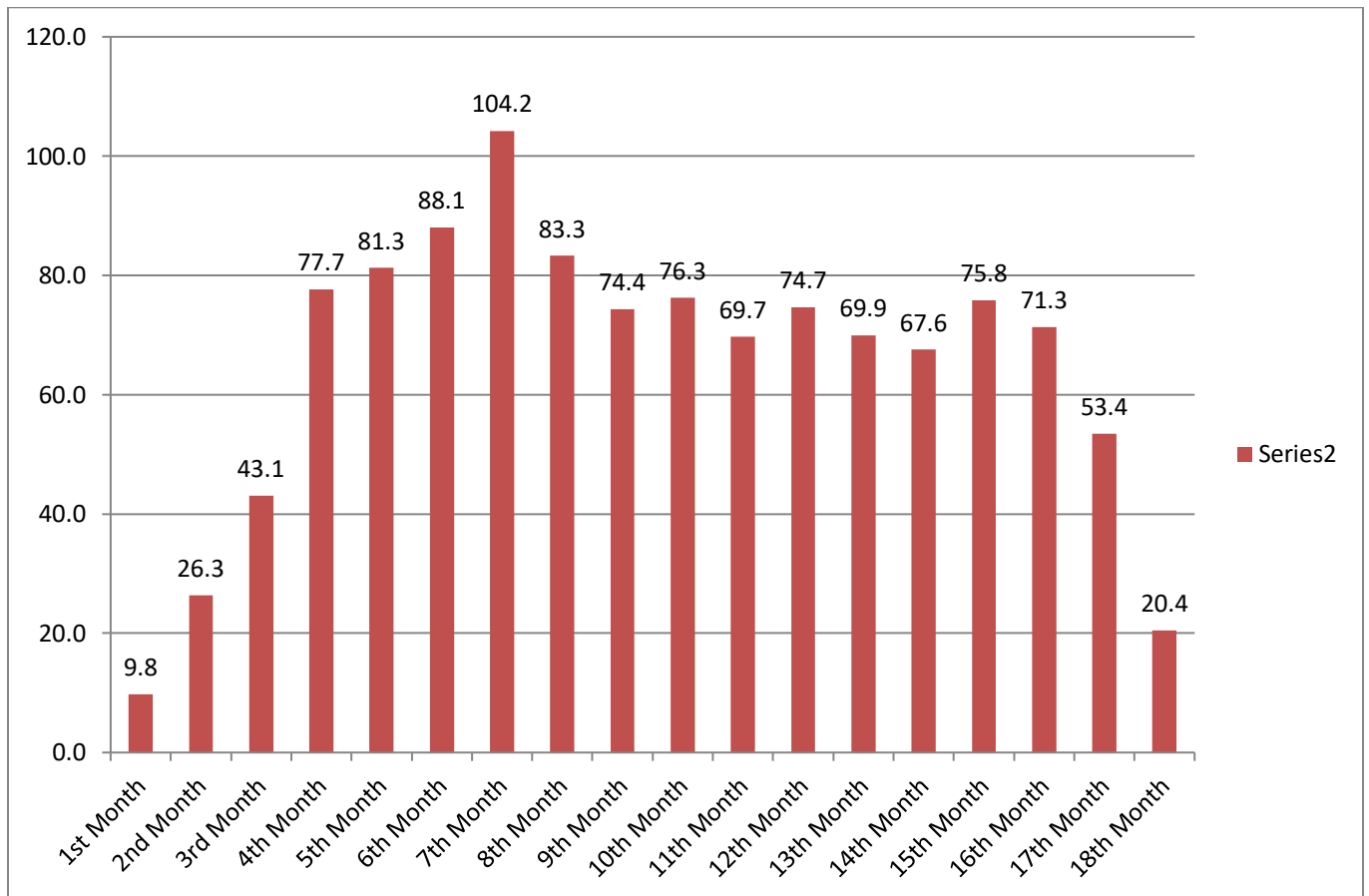


### List of lab Equipment Employment:

➤ Vernier Calipers 0-150 mm	:	1 No's
➤ Screw gauge 0-25 mm	:	1 Nos
➤ Measurement tapes both Steel each	:	5mt-4
➤ (3.0 m, 5.0 m) & Fiber(15.0 m) each	:	15mt-2
➤ 30 cm steel scale	:	4 Nos
➤ Weighing Machines 5.0kg capacity :		2 Nos
➤ Sieves for Coarse aggregate	:	12 Nos
➤ Sieves for fine aggregate	:	12 Nos
➤ Cube moulds ISI marked 150 x150 x 150 mm(6 nos.)	:	24 Nos
➤ Compression testing machine 100 MT, Capacity for cube test and Brick testing attachment	:	1 Nos
➤ Slump cone	:	2 Nos
➤ Carpenter's square 150mm with Graduations: 1 no	:	1 Nos
➤ Electrical Oven	:	1 Nos
➤ Spirit level	:	4 Nos
➤ Plum bobs	:	4 Nos
➤ Measuring Jars (2)250ml, 500 ml	:	4 Nos
➤ Magnetic compass	:	1 Nos
➤ Levelling Instrument	:	1 Nos
➤ Vicats Apparatus	:	2 sets
➤ Le-Chatelier Apparatus	:	2 sets



## Cash Flow Chart







# STANDARD INFRATECH INDIA PRIVATE LTD

## SAFETY AND QUALITY CONCEPT

The Company Management conducts periodical workshops on Safety & QC every month. Precautions and quality control procedure and practices that are to be observed at the time of execution of the work are discussed and the Management continuously monitors the aspect of Safety & QC with the site supervisory staff. The technocrats of the company will be sent for periodical updating of their technical skills to reputed Organizations and Institutions. Latest packages of technical knowhow will be imported time to time basing on the on hand requirement of the Projects.

The Company has establishes a laboratories at site offices and conducts all tests at site to ensure quality of work being executed. The Project Engineer is in over all control of the site laboratory, in addition to the progress of work and timely execution. The firm has got good reputation on time bound progress and quality of work, at all the projects so far executed.

Name of Work: Beachfront Re-Development at RK Beach																							
Name of Agency : Standard Infratech India Private Limited JV With SPL Infrastructure Private Limited ( SIPL-SPL JV)																							
Physical&Financial Program chart																							
Agreement No.											Contract. Value Rs. 116,71,27,369/												
Date of Commencement .											Period of completion 18 months												
S.No	Item Description	Units	Quantity	Amount in Rs	Mile Stone:- 1						Mile Stone:- 2						Mile Stone:- 3						Total
					1	2	3	4	5	6	7	8	9	10	11	12	13	14	15	16	17	18	
					Nov-20	Dec-20	Jan-21	Feb-21	Mar-21	Apr-21	May-21	Jun-21	Jul-21	Aug-21	Sep-21	Oct-21	Nov-21	Dec-21	Jan-22	Feb-22	Mar-22	Apr-22	
	<b>ROAD WORKS</b>																						
1	Earth work excavation for foundations (Manual Means) of buildings, septic tank, sump, compound wall in ordinary soils	Sqm	2476.16	723039																			
	Physical Quantities				825	826	826																
	Financial				2.41	2.41	2.41															7.23	
2	Earth work excavation for foundations and depositing on bank for all lifts and with an initial lead of 10m including all	Cum	9904.64	1168748																			
	Physical Quantities				2477	2477	2477	2477															
	Financial				2.92	2.92	2.92	2.92														11.69	
3	Construction of (GSB) granular sub-base by providing well graded material, spreading in uniform layers with motor grader on	Cum	4672.00	10381184																			
	Physical Quantities						1168	1168	1168	1168													
	Financial						25.95	25.95	25.95	25.95												103.81	
4	Providing, laying, spreading and compacting graded stone aggregate to (WMM) wet mix macadam	Cum	5840.00	14962080																			
	Physical Quantities						1460	1460	1460	1460													
	Financial						37.41	37.41	37.41	37.41												149.62	
5	Providing and applying primer coat with bitumen emulsion on prepared surface of granular Base including clearing of road	Sqm	23360.00	911040																			
	Physical Quantities						5840	5840	5840	5840													
	Financial						2.28	2.28	2.28	2.28												9.11	
6	Providing and laying dense graded bituminous macadam with 100-120 TPH batch type HMP producing an average	Cum	1168.00	11293392																			
	Physical Quantities						292	292	292	292													
	Financial						28.23	28.23	28.23	28.23												112.93	





















S.No	Item Description	Units	Quantity	Amount in Rs	Mile Stone:- 1						Mile Stone:- 2						Mile Stone:- 3						Total			
					1	2	3	4	5	6	7	8	9	10	11	12	13	14	15	16	17	18				
					Nov-20	Dec-20	Jan-21	Feb-21	Mar-21	Apr-21	May-21	Jun-21	Jul-21	Aug-21	Sep-21	Oct-21	Nov-21	Dec-21	Jan-22	Feb-22	Mar-22	Apr-22				
89	<b>TOILET -2 (ELECTRICAL)</b>	LS		408438																						
	Physical Quantities																									
	Financial																1.36	1.36	1.36							4.08
90	<b>TOILET -2 (PLUMBING)</b>	LS		959251																						
	Physical Quantities																									
	Financial									2.40	2.40	2.40												2.40		9.59
91	<b>TOILET -2 PUMP &amp; EQUIPMENT</b>	LS		141692																						
	Physical Quantities																									
	Financial																1.42									1.42
92	<b>TOILET -2 WATER ATM</b>	No	1	818660																						
	Physical Quantities																									
	Financial																							8.19		8.19
	<b>LIFE GURD TOWER</b>																									
93	<b>LIFE GURD TOWER (CIVIL)</b>	LS		5545231																						
	Physical Quantities																									
	Financial						9.24	9.24	9.24	9.24	9.24	9.24														55.45
94	<b>LIFE GUARD TOWER (ELECTRICAL)</b>	LS		722964																						
	Physical Quantities																									
	Financial																	2.41	2.41	2.41						7.23
	<b>BICYCLE RENT SHOP</b>																									
95	<b>BICYCLE RENT SHOP (CIVIL)</b>	LS		2656233																						
	Physical Quantities																									
	Financial						4.43	4.43	4.43	4.43	4.43	4.43														26.56
96	<b>BICYCLE RENT SHOP (ELECTRICAL)</b>	LS		389210																						
	Physical Quantities																									
	Financial																	1.30	1.30	1.30						3.89
97	<b>BICYCLE RENT SHOP (PLUMBING)</b>	LS		265694																						
	Physical Quantities																									
	Financial										0.66	0.66	0.66											0.66		2.66
98	<b>BICYCLE RENT SHOP WATER ATM</b>	No	2	1637320																						
	Physical Quantities																									
	Financial																							16.37		16.37
	<b>BUS STOP</b>																									
99	<b>BUS STOP (CIVIL)</b>	LS		4417492																						
	Physical Quantities																									
	Financial						7.36	7.36	7.36	7.36	7.36	7.36														44.17
100	<b>BUS STOP (ELECTRICAL)</b>	LS		1123038																						
	Physical Quantities																									
	Financial																	3.74	3.74	3.74						11.23

S.No	Item Description	Units	Quantity	Amount in Rs	Mile Stone:- 1						Mile Stone:- 2						Mile Stone:- 3						Total
					1	2	3	4	5	6	7	8	9	10	11	12	13	14	15	16	17	18	
					Nov-20	Dec-20	Jan-21	Feb-21	Mar-21	Apr-21	May-21	Jun-21	Jul-21	Aug-21	Sep-21	Oct-21	Nov-21	Dec-21	Jan-22	Feb-22	Mar-22	Apr-22	
	<b>SHOPS (CIVIL)</b>																						
101	<b>SHOPS (CIVIL)</b>	LS		10556952																			
	Physical Quantities																						
	Financial					17.59	17.59	17.59	17.59	17.59	17.59											105.57	
102	<b>SHOPS (ELECTRICAL)</b>	LS		2608290																			
	Physical Quantities																						
	Financial															8.69	8.69	8.69				26.08	
103	<b>SHOPS (PLUMBING)</b>	LS		1340903																			
	Physical Quantities																						
	Financial									3.35	3.35	3.35								3.35		13.41	
104	<b>SHOP PUMP &amp; EQUIPMENT SUBMERSIBLE CENTRIFUGAL TRANSFER PUMPS</b>	LS		218714																			
	Physical Quantities																						
	Financial																			2.19		2.19	
105	<b>SHOP WATER ATM</b>	No	1	818660																			
	Physical Quantities																						
	Financial																			8.19		8.19	
	<b>WATER ATM (CIVIL)</b>																						
106	<b>WATER ATM (CIVIL)</b>	LS		3652399																			
	Physical Quantities																						
	Financial					6.09	6.09	6.09	6.09	6.09	6.09											36.52	
107	<b>WATER ATM (PLUMBING)</b>	LS		976084																			
	Physical Quantities																						
	Financial									2.44	2.44	2.44								2.44		9.76	
108	<b>WATER ATM</b>	No	8	6549280																			
	Physical Quantities																						
	Financial																			65.49		65.49	
	<b>PUMP ROOM</b>																						
109	<b>PUMP ROOM (CIVIL)</b>	LS		11520412																			
	Physical Quantities																						
	Financial					19.20	19.20	19.20	19.20	19.20	19.20											115.20	
110	<b>PUMP ROOM (ELECTRICAL)</b>	LS		5773463																			
	Physical Quantities																						
	Financial															19.24	19.24	19.24				57.73	
111	<b>PUMP ROOM (PLUMBING)</b>	LS		44758728																			
	Physical Quantities																						
	Financial									74.60	74.60	74.60	74.60	74.60						74.60		447.59	
112	<b>STATUE RELOCATION</b>	LS		7071981																			
	Physical Quantities																						
	Financial									11.79	11.79	11.79	11.79	11.79	11.79							70.72	

S.No	Item Description	Units	Quantity	Amount in Rs	Mile Stone:- 1						Mile Stone:- 2						Mile Stone:- 3						Total
					1	2	3	4	5	6	7	8	9	10	11	12	13	14	15	16	17	18	
					Nov-20	Dec-20	Jan-21	Feb-21	Mar-21	Apr-21	May-21	Jun-21	Jul-21	Aug-21	Sep-21	Oct-21	Nov-21	Dec-21	Jan-22	Feb-22	Mar-22	Apr-22	
113	<b>CONSTRUCTION/ EXTENSION OF CULVERTS</b>	LS		6938830																			
	Physical Quantities																						
	Financial												11.56	11.56	11.56	11.56	11.56	11.56				69.39	
114	<b>RETROFITTING OF CULVERTS</b>	LS		6779169																			
	Physical Quantities																						
	Financial												11.30	11.30	11.30	11.30	11.30	11.30				67.79	
115	<b>ELECTRICAL WORKS</b>	LS		71454827																			
	Physical Quantities																						
	Financial												59.55	59.55	59.55	59.55	59.55	59.55	59.55	59.55	59.55	714.55	
116	<b>CCTV AND ITS SYSTEM</b>	LS		753534																			
	Physical Quantities																						
	Financial																			3.77	3.77	7.54	
117	<b>ELECTRICAL ROOM (CIVIL)</b>	LS		1732457																			
	Physical Quantities																						
	Financial					2.89	2.89	2.89	2.89	2.89	2.89	2.89										17.32	
118	<b>IRRIGATION TANKS (CIVIL)</b>	LS		2724742																			
	Physical Quantities																						
	Financial					4.54	4.54	4.54	4.54	4.54	4.54	4.54										27.25	
119	<b>PLUMBING WORKS DRAINAGE SYSTEM</b>	LS		3837640																			
	Physical Quantities																						
	Financial						3.84	3.84	3.84	3.84						3.84	3.84	3.84	3.84	3.84	3.84	38.38	
120	<b>SIGNAGE-1,2,3,4,5,6,7</b>	LS		1838500																			
	Physical Quantities																						
	Financial																			4.60	4.60	4.60	18.39
	<b>SOFTSCAPE</b>																						
121	<b>Supplying good earth: Providing well draining good earth including transport, spreading and mixing etc.</b>	Cum	5035	5875845																			
	Physical Quantities																						
	Financial														14.69	14.69	14.69	14.69				58.76	
122	<b>Supplying of organic manure: Organic manure should be well rotten and of standard quality (Preferably Dynamic lifter).</b>	Cum	10070	11570430																			
	Physical Quantities																						
	Financial														28.93	28.93	28.93	28.93				115.70	
123	<b>Supplying of organic manure: Organic manure should be well rotten and of standard quality (Preferably Dynamic lifter).</b>	Cum	5035	13216875																			
	Physical Quantities																						
	Financial														33.04	33.04	33.04	33.04				132.17	



S.No	Item Description	Units	Quantity	Amount in Rs	Mile Stone:- 1						Mile Stone:- 2						Mile Stone:- 3						Total
					1	2	3	4	5	6	7	8	9	10	11	12	13	14	15	16	17	18	
					Nov-20	Dec-20	Jan-21	Feb-21	Mar-21	Apr-21	May-21	Jun-21	Jul-21	Aug-21	Sep-21	Oct-21	Nov-21	Dec-21	Jan-22	Feb-22	Mar-22	Apr-22	
132	Providing and erecting 2.00 metre high temporary barricading at sites as per drawing/ direction of Engineer-in-Charge	No	20	879900																			
	Physical Quantities				10.0	10.0																	
	Financial				4.40	4.40																	
133	Providing, maintaining, cleaning and shifting of wet type mobile toilet	No	2	82490																			
	Physical Quantities				2.0																		
	Financial				0.82																		
134	Providing, maintaining of mobile drinking water counter/kiosk	No	4	274968																			
	Physical Quantities				2.0	2.0																	
	Financial				1.37	1.37																	
135	Provision of traffic wardens along operational area, near to junctions / intersections (8-hour shift)	Man Day	6072	4177536																			
	Physical Quantities				337	337	337	337	337	337	337	337	337	337	337	337	337	337	337	337	337		
	Financial				2.32	2.32	2.32	2.32	2.32	2.32	2.32	2.32	2.32	2.32	2.32	2.32	2.32	2.32	2.32	2.32	2.32		
	Total			1167127370	98	263	431	777	813	881	1042	833	744	763	697	747	699	676	758	713	534	204	
	Total Amount per Month				9769847	26313460	43057504	77656910	81251429	88057204	104226153	83288165	74360426	76284625	69684332	74685510	69944287	67581657	75802131	71292887	53434250	20436594	
	Total Amount per Mile Stone				326106353						482529210						358491806						
	Total Culmalative Amount per Mile Stone			11671	326106353						808635564						1167127370						
	Percentage Per Month %				0.84	2.25	3.69	6.65	6.96	7.54	8.93	7.14	6.37	6.54	5.97	6.40	5.99	5.79	6.49	6.11	4.58	1.75	
	Culmalative Percentage %				0.84	3.09	6.78	13.43	20.40	27.94	36.87	44.01	50.38	56.91	62.89	69.28	75.28	81.07	87.56	93.67	98.25	100.00	
	Percentage Per Mile Stone %				27.94						41.34						30.72						
	Culmalative Percentage of Mile stone %				27.94						69.28						100.00						



**Thank you**